



ADVENTURE Journeys

July 2022

Holiday Closings

Saturday, July 2nd Independence Day

Monday, July 4th Independence Day

Saturday, Sept. 3rd Labor Day

Monday, Sept. 5th Labor Day

WANT TO IMPROVE YOUR CREDIT SCORE?

Sign up for Credit Sense within digital banking for actionable insights.

It's free, easy, and secure.



FINANCIALS

as of May 31, 2022

- **Assets:**
\$450,771,221
- **Loans:**
\$304,240,532
- **Shares & Deposits:**
\$393,850,511
- **Members:**
30,443

SPECIAL MORTGAGE RATES!



Are you interested in buying a new home but worried about rising interest rates? Adventure may have the solution. For a limited time, we are offering special mortgage rates below the market average. See today's rates on our website or call us at (800) 323-2129 opt. 5.

ADVENTURE GIVES

We are pleased to report that our Adventure Gives program is off to a great start in 2022. As of June 30th, we've had:

22



Community Events

363



Volunteer Hours

91



Employee Volunteers

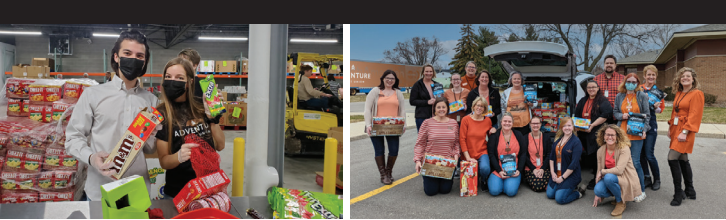
\$10,405



Donations & Sponsorship

At Adventure Credit Union, we believe it is important to be an active part of the communities we serve. Please follow us on social media to learn more and see photos from all of our volunteer events.





WEST MICHIGAN'S
**BEST AND
BRIGHTEST**
COMPANIES
TO WORK FOR
WINNER 2022


ADVENTURE
CREDIT UNION

Thanks to our amazing team for making us one of West Michigan's Best and Brightest Companies to Work For!



Congrats to our 2022 Dollars for Scholars Scholarship Winners



Ashley



David



Jaguleyn



Kayla



**AUTO FINANCING
DONE RIGHT**

Next time you're in the market for a new or used vehicle make Adventure Credit Union your first stop. Our Ready to Drive program makes financing your vehicle purchase seriously quick and easy. Once your loan is approved, we'll give you a check that can be used at any dealership to purchase nearly any vehicle. Plus, borrowing from Adventure is often cheaper than other options.

Get started by applying for an auto loan online at Adventurecu.org.

**DOES YOUR
RETIREMENT
MATH ADD UP?**

When it comes to retirement, it's all about the numbers—how much money you'll need and how much you're saving to get there. Find out your retirement numbers with this five-minute calculation. With the right information, you can move ahead and plan with confidence.



James Bird
Financial Advisor - Manager
jimb@adventurecu.org
P 800.323.2129 x0125 F 616.514.1824

630 32nd Street SE
Grand Rapids, MI 49518
adventurecu.org



Ralph Kapalczynski
Financial Advisor
ralphk@adventurecu.org
P 800.323.2129 x1805 F 517.333.9857

6250 S. Cedar Street, Suite 14
Lansing, MI 48911
adventurecu.org

**Need your numbers?
Contact us today to
learn more.**


ADVENTURE
RETIREMENT AND
INVESTMENT SERVICES

The Financial professional at Adventure Credit Union are financial advisors with, and securities and advisory services are offered through LPL Financial (LPL), a registered investment advisor and broker-dealer (member FINRA/SIPC). Insurance products are offered through LPL or its licensed affiliates. Adventure Credit Union and Adventure Retirement and Investment services are not registered as a broker-dealer or investment advisor. Registered representatives of LPL offer products and services using Adventure Retirement and Investment services, and may also be employees of Adventure Credit Union. These products and services are being offered through LPL or its affiliates, which are separate entities from, and not affiliates of, Adventure Credit Union or Adventure Retirement and Investment Services. Securities and insurance offered through LPL or its affiliates are:

Not Insured by NCUA or Any Other Government Agency	Not Credit Union Guaranteed	Not Credit Union Deposits or Obligations	May Lose Value
--	-----------------------------	--	----------------

MKT 00079-0317 Tracking #1-05296486 (Rev. 02/20)

LOCATIONS

GRAND RAPIDS

- Corporate 630 32nd Street SE
- Alpine 3286 Alpine Avenue NW
- Grandville 5165 Wilson Avenue SW
- Kentwood 6672 Crossings Drive SE
- Plainfield 4211 Plainfield Avenue NE

LANSING

- Lake Lansing 2250 Lake Lansing Road, Suite A
- South Cedar 6250 S. Cedar Street, Suite 14

HOURS

- Mon - Fri 9am - 5pm
- Saturday 9am - Noon
- at select locations, text "branch" to 800-323-2129 for details



ADVENTURE
CREDIT UNION



M.P.O. Box 895, Grand Rapids, MI 49518 • P 800.323.2129 • W AdventureCU.org

